



Servite  
College

# Student Uniform

## Policy



# STUDENT UNIFORM POLICY

## RATIONALE

The Student Uniform Policy has been developed in consultation with members of the College community, including students, and is approved by the Servite College Council.

The uniform plays an important part in supporting the College's values and in establishing a sense of belonging and positive community identity. It supports students to understand appropriate work ethic, manage workplace expectations and transition students to young adulthood. Further, the uniform provides for identification and security.

## SCOPE

Acceptance of enrolment at the College assumes an agreement between the parent/caregiver and the student that the student will dress in accordance with the College's Student Uniform Policy. Students are required to wear the uniform during the school day, including to and from school, and on school sanctioned tours, excursions or activities.

Every student is expected to comply with the Student Uniform Policy in the same way that they are expected to comply with the expectations regarding classroom behaviour and attendance. All issues relating to the uniform should be directed to Student Services, led by the Deputy Principal Community.

## INTRODUCTION OF *Uniform Wardrobes*

Commencing Term 2 of 2023, students are able to mix and match items from the uniform wardrobes, to which many new items have been added. In the past, students were restricted to a summer (Terms 1 and 4) and winter (Terms 2 and 3) uniform - this is no longer the case, as the seasonal restrictions have been removed.

Students can now choose from a range of items based on their personal preference, the weather and planned daily activities.

Our new mix and match wardrobe embraces the College's historical colours and values, and is appropriate for all activities, ages and body shapes.

We have strived to design a wardrobe that is inclusive, flexible and comfortable, while promoting a strong sense of identity among our students.

*Due to the significant change in culture this new policy presents, this document is subject to change.*



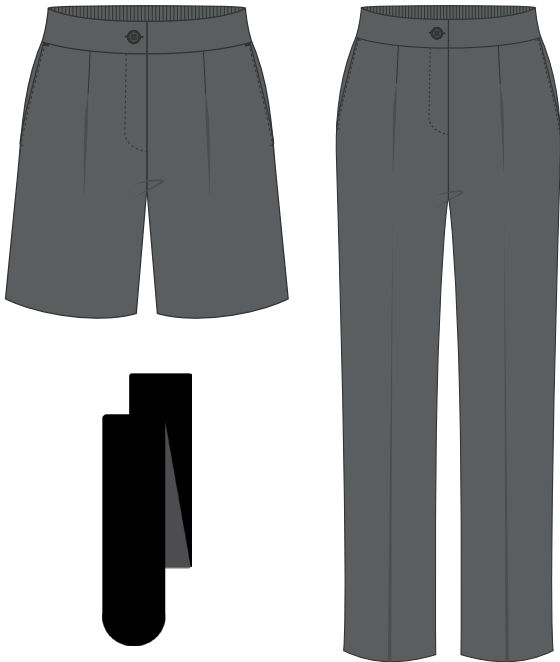
# SERVITE GENERAL WARDROBE

Students may wear a combination of these basic items at any time during the year:

## GIRLS BASICS



The skirt is to be worn just above the knee.  
Shorts should sit mid to lower thigh.



Black opaque stockings with skirt only

Students must not roll waistband of shorts or skirt.  
Girls college socks are available in white and grey.

## BOYS BASICS



The new boys shirt is designed to be worn untucked.  
The existing shirt must continue to be worn tucked in.



Boys wear the grey college socks with the general wardrobe.

All students to wear formal black lace-up leather shoes with general wardrobe.  
(Airforce 1 and Air Max style shoes are not acceptable).



# SERVITE GENERAL WARDROBE

## OPTIONAL ITEMS FOR ALL STUDENTS

One or more of the following items can be added to the wardrobe basics at any time during the year:



Knit vest



Tie



Puffer vest



Knit cardigan



Knit jumper



Puffer jacket



Blazer

*\*See notes on page 7*



# SERVITE SPORT WARDROBE

Students can choose from the following items on a physical activity school day:



Sports polo



Boys shorts



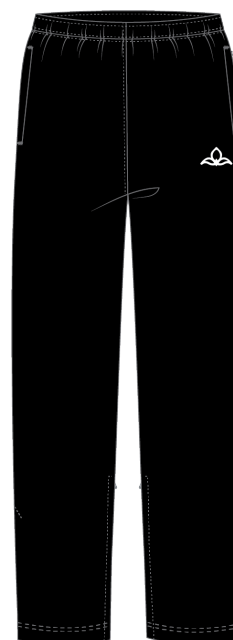
Girl shorts



Track jacket



Sports hoodie



Track pants



Puffer vest



Puffer jacket

White college socks are worn with the Sport wardrobe, along with athletic shoes appropriate for sporting activities. Casual shoes such as Vans, Converse or canvas shoes are not appropriate.

Students must not roll the waistband of the shorts.



# PRIORY POLO

Worn every Wednesday with Sport wardrobe,  
and other days as advised, eg. Carnivals and Feast Days.



## BAGS AND SPORT SPECIFIC UNIFORMS

### Bags

All students are to carry the black College school bag to and from school.  
Optional sport and swimming bags are also available.

### College Sports Uniforms

When representing the College in sporting competitions, uniforms specific to the sport will be provided by the College, such as tops for basketball, athletics, football, soccer and volleyball.  
Students representing the College in swimming are required to purchase the College bathers.



# ACCESSORIES

## GENERAL WARDROBE



Scarf

*The existing green scarf can continue to be worn, but will no longer be sold.*



Black belt

### NAME THAT ITEM!



With so many more items available, it is crucial that all items be clearly labelled with student name and homeroom so they may be returned to the correct owner.

## SPORT WARDROBE



Brim hat



Cap



Beanie

## BLAZER AND TIE

The College Blazer and tie are required to be worn to formal College events including but not limited to:

- Awards ceremonies
- Student leadership events
- Graduation ceremonies
- Formal assemblies
- External school events

The Uniform Shop will stock a small supply of blazers and ties for hire. If a student does not own a blazer or tie, they **MUST** be hired from the Uniform Shop. Students will be informed in advance of events requiring the blazer and tie.



Students must present themselves ready for school each day in adherence with the following:

## HAIRSTYLES AND FACIAL HAIR

- Hairstyles are to be neat, clean and conservative in style
- Hair must be of one natural colour
- The addition of hair colour must be so subtle that visible regrowth will not be evident
- Hair falling below collar length must be all one length and be tied back
- Hair must be always off the face
- Extreme hair styles are not acceptable
- 'Skin fades' (short back, sides and top) are acceptable but must be graduated with the rest of hair
- No lines or patterns are to be shaved into a student's hair or eyebrows
- A box cut at the front is acceptable
- Accessories such as ribbons, clips or scrunchies should be black, white, green or hair colour.
- Boys must be clean-shaven. Sideburns are to be no further than the mid-ear

### Examples of unacceptable hairstyles:

- 'Drop fades' resembling mohawks
- 'Mullet' style haircuts
- 'Rats tails'
- Extreme differences in lengths

## JEWELLERY

- A wrist watch
- One pair of plain gold or silver stud or sleeper earrings, worn in the lower lobe of each ear. Small stones or diamantes acceptable, no images or hanging parts
- One simple bracelet, gold or silver to be worn on the wrist with no hanging parts
- One simple gold or silver ring
- One thin gold or silver necklace, small pendants acceptable
- No body piercings
- No other jewellery is acceptable

## MAKEUP

- Makeup is not permitted at school, including but not limited to, false eyelashes, nail polish.
- No tattoos.

## NOTES

- Parents are encouraged to meet with their student's Head of Community to resolve any issues regarding student presentation and uniform
- Final discretion on the appropriateness of uniform and presentation remains with the Principal and the Deputy Principal Community.





