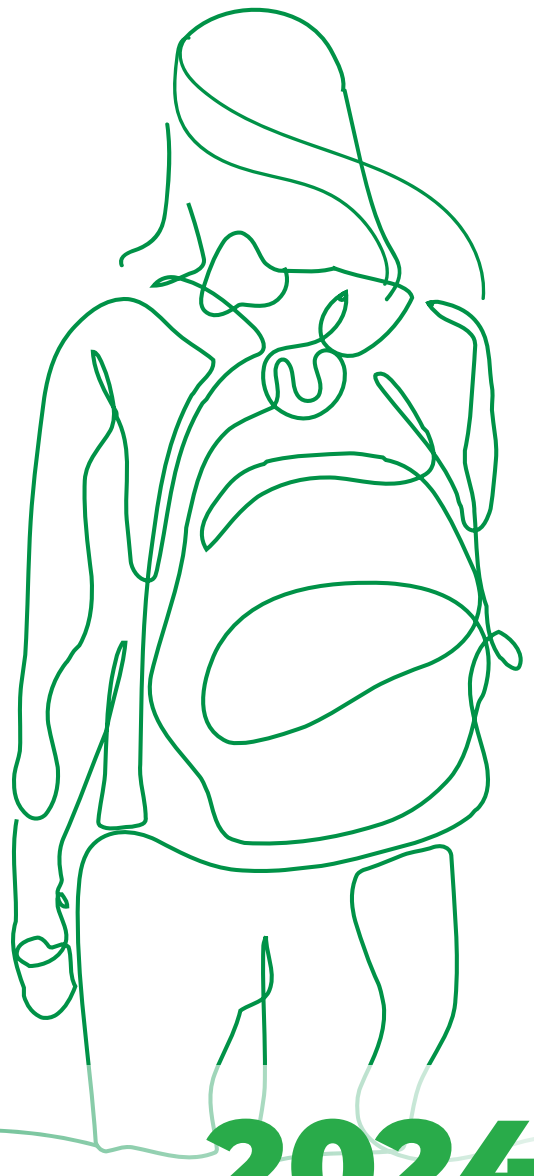
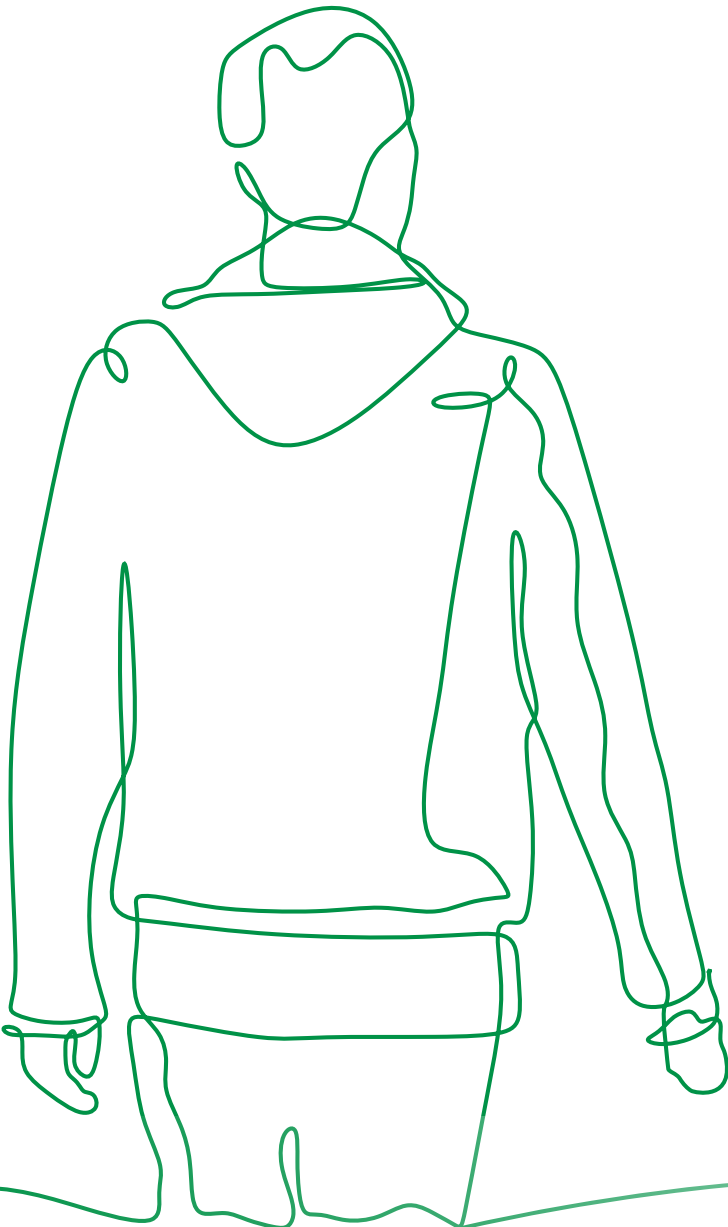




Servite
College

POST SCHOOL

Destinations



2024

POST SCHOOL DESTINATIONS

WHAT ARE MY OPTIONS AFTER YEAR 12 ?

Students leaving school after Year 12 typically follow one of these options:

- University Entry
- TAFE Entry
- Apprenticeship/Traineeship
- Employment

All students should be aware that some university courses require specific prerequisite subjects in Year 12, and that some TAFE courses are highly competitive, so completing certain courses in senior school can be an advantage in terms of entry into these courses.



UNIVERSITY ENTRY

UNIVERSITY ADMISSION REQUIREMENTS

To be considered for admission to a public university a school leaver must:

1. Achieve the Western Australian Certificate of Education (WACE).
2. Achieve competence in English, as prescribed by the individual university.
Normally this requires a scaled mark of at least 50 in Year 12 English ATAR or Literature ATAR
3. Satisfy any pre-requisites for entry to a particular course.
To meet this requirement students need a scaled mark of at least 50 in the specified ATAR course/s at Year 12 level.
4. Achieve an Australian Tertiary Admission Rank (ATAR) which exceeds the minimum ATAR or Selection Rank for the chosen course.

For complete information, visit:

<https://www.tisc.edu.au/static/guide/admission-req-sleaver.tisc>

2025 University Entry (Year 11 2023)

<https://www.tisc.edu.au/static-fixed/guide/slar-2025.pdf>

2026 University Entry (Year 10 2023)

<https://www.tisc.edu.au/static-fixed/guide/slar-2026.pdf>

AUSTRALIAN TERTIARY ADMISSION RANK (ATAR)

The ATAR is a number between 0 and 99.95 that indicates a student's relative position compared with all other people of school leaving age in the total population. So the ATAR is simply an indication of where a student sits in this ranking compared to other students who sat the WACE exams that year.

Information relating to the cut-off ATAR for course entry can be obtained from the relevant university, the TISC website www.tisc.edu.au or the Servite College Head of Career Development, Mr Schirripa.

For complete ATAR information, visit the TISC website:

www.tisc.edu.au/static/guide/atar-about.tisc

CALCULATING ATAR SCORE

The ATAR is the standard basis of admission to most university courses. Students are ranked in order of merit based on your ATAR. The ATAR ranges between zero and 99.95. It reports a student's rank relative to all other Year 12 students in the state.

An ATAR of 75.00 indicates that you have an overall rating equal to or better than 75% of the Year 12 school leaving age population in Western Australia.

The ATAR is calculated using scaled scores in ATAR courses.

SCALED SCORES

Once students have finished all their school-based assessment in an ATAR course, their school will send a mark to SCSA. This is a student's raw school mark. -this is generated from assessments completed in class throughout year 12.

Next, all students enrolled in ATAR courses will sit an external WACE examination for each of these courses. The WACE exams are held in November each year. The mark a student achieves in this exam is known as their **raw exam mark**.

Before the raw exam mark and the raw school mark can be used SCSA applies a number of statistical calculations to these.

Firstly, SCSA conducts a procedure called **moderation** to adjust school marks by looking at the performance of groups of students in the exam. This ensures students are not advantaged or disadvantaged if they were marked or assessed more easily by their school compared to teachers at other schools. This **moderated school mark** is then added to the student's raw exam mark to give a **course combined mark**.

The course combined marks are then **standardised**. While exams are written by experienced educators, pitched at a particular level of difficulty, we know that sometimes they may be easier or more difficult for students than in other years. Standardisation is carried out so that there is no advantage or disadvantage based on whether one exam was more difficult or easier than another exam that year.

All course results will then be **scaled by TISC** via a process called Average Marks Scaling. Scaling is a very important part of the marks adjustment process. In general terms, a subject is scaled according to the marks that all students doing that subject achieved in their other three, four or five courses. Its aim is to ensure that students who are completing more difficult courses are not disadvantaged compared to those students studying courses that are considered less academically demanding and hence less rigorous. This process is applied to each of the Year 12 ATAR courses the student has studied and the final mark is called the **scaled score** for that course.

Scaling is not pre-determined, so TISC cautions students against selecting courses on the basis of how you think they will be affected by scaling.

The **best four final scaled scores** are then added together to get a total out of 400. This total together with any subject bonuses (worth up to 30 marks – see below) are added together to get a score out of 430. This score is known as the Tertiary Entrance Aggregate or TEA.

LOTE AND MATHEMATICS BONUSES

Bonuses are available to students which are then added to their Tertiary Entrance Aggregate. The bonuses are for Languages other than English (Italian ATAR), Mathematics Methods ATAR and Mathematics Specialist ATAR.

If a student is studying any of these subjects in Year 12, 10% of their scaled score for each of these is added to their total Tertiary Entrance Aggregate (TEA) to get a score out of 430. A student's TEA therefore consists of the final scaled score for each of his/her best 4 subjects added together with any appropriate subject bonuses to get a total out of 430. This score (TEA) is then used to rank all students sitting the WACE exams that year from the highest TEA to the lowest TEA. This ranking is used to determine a student's ATAR.



ATAR AND UNIVERSITY ENTRY

UNIVERSITY ENTRY MINIMUM ATAR

The ATARs shown below were the minimum scores to be considered for entry into each university in 2023. Many courses have much higher entry ATARs.

University	Min ATAR	Average per Course
University of Western Australia	75	62%
Curtin University	70	55%
Murdoch University	70	55%
Edith Cowan University	70	55%

ATAR AND UNIVERSITY ENTRANCE

The ATAR required to gain entry into a particular university course will vary from course to course and from year to year depending on student demand for particular courses and the number of places available for those courses.

The next table summarises a sample of courses and the ATAR that was required to gain entry in the first round of offers made by the four public universities in 2022. The second column has been included to show the approximate average scaled mark required in the best four subjects studied in Year 12.

CURTIN - Min 70		UWA - Min 75		MURDOCH - Min 70		ECU - Min 70	
Actuarial Science	92	<i>Undergraduate Degrees</i>		Vet Science	98	Teaching (ECE)	70
Physiotherapy	90	Science/Arts	75	Animal Science	70	Teaching (Primary)	70
Engineering	80	Commerce	80	Engineering	80	Teaching (Secondary)	70
Physics/Comm Engineering	80	Philosophy	98	Law (double and single)	90	Law	85
Pharmacy	80	Engineering	80	Business/Commerce	70	Engineering	80
Law	90	Environ/Biol Science	80	Games Technology	70	Occupational Therapy	80
Law/Commerce	90	<i>Assured Pathways</i>		Primary Teaching	70	Speech Pathology	80
Commerce	70	Pharmacy	94	Chiropractic	70	Exercise & Sport Science	70
Occupational Therapy	83	Law	96	Computer Science	70	Commerce	70
Teaching	70	Psychology	94	Environmental Science	70	Nursing	70
Nursing	70	B. Philosophy	98.2	Nursing	70		
		Education	80				

While some of these required ATARs may encourage many students to select a university pathway course in Year 11 and 12, it should be remembered that:

- the academic rigor of university courses is high
- failure rates for first year students at universities are significant
- employment prospects for students graduating with lower university grades are not as promising.

TISC VIDEO GUIDES

TISC has produced a series of videos covering a range of relevant topics. These include:

- An explanation of the university entrance requirements,
- How the ATAR is calculated,
- How the scaling process is applied,
- How to apply to university and
- Using your course preferences etc.

The full collection of videos is available at <https://www.tisc.edu.au/static/guide/video.tisc>

ENTRY TO THE UNIVERSITY OF NOTRE DAME AUSTRALIA

Notre Dame selects students on the basis of a broad range of information provided by the student, the student's school and others in a position to provide supporting evidence.

This process is designed to ensure that the university selects students who demonstrate:

- Adequate ability, preparation and potential to succeed in university studies.
- The motivation to complete such a course.
- Personal qualities that will enhance the university community.

If this process identifies the student as a potential candidate for admission to the University, he/she is invited to an interview. Students will need to provide:

- a completed application form
- full academic results of Year 11 and Semester One Year 12 studies
- a personal reference
- a completed Notre Dame School Reference form in which the school provides a professional judgment of the student's ability, performance and potential, as well as comments on more general attributes exhibited by the student in the school environment.

TAFE ENTRY

TAFE offers a wide range of courses, typically of shorter duration than university courses. For example Certificate II courses can be completed in one semester, Certificate IV courses can normally be completed in one year, and Diploma and Advanced Diploma courses may be completed over two years. Fees are payable, depending on the level of the qualification and its resource requirements.

In the metropolitan area there are two TAFE Colleges:



North Metropolitan TAFE offers courses in a wide range of disciplines, including business, legal, health, education, community service, science sustainability, and tourism. Some of its TAFE Certificate IV, Diploma, and Advanced Diploma courses provide pathways to university degrees.



South Metropolitan TAFE offers a range of classroom-based and online TAFE courses, short courses, and apprenticeships and traineeships from several campuses training centres south of Perth, WA.

A TAFE course of study is becoming an increasingly desirable qualification for future employment and has gained a high degree of credibility and acceptance by employers, licensing bodies and professional institutions. TAFE's nationally recognised courses provide para-professional training, pre-apprenticeship training and entry-level courses that can lead on to University study.

TAFE COURSES

TAFE offers almost 1000 courses of which over 400 are full-time each with specific entry requirements. TAFE offers six levels of courses:

Certificates I and II – Job Ready

Certificates I and II are entry-level courses providing students with the basic skills to get a job. They learn the essential knowledge and skills required by the industry area as a worker with limited responsibilities. These usually take one semester to complete.

Certificate III – Trade and Intermediate Service Workers

A Certificate III prepares students for employment at junior to intermediate levels in Clerical, Sales and Service work. It is usually required for recognition as a tradesperson. Most apprenticeships and traineeships lead to a trade course at this level.

Certificate IV – Associate Professionals and Supervisors

A Certificate IV gives students a broad knowledge of their chosen industry and substantial depth in some areas. The course prepares them to take limited responsibility for others, usually in a supervisory role. Most Cert IVs take one year to complete.

Diploma, Advanced Diploma and Associate Degree – Professionals and Managers

Diplomas, Advanced Diplomas and Associate Degrees prepare students to work autonomously and be involved in solving technical issues. These qualifications take between one and two years to complete.

TAFE PATHWAYS

TAFEWA qualifications are designed in a sequence so that a student can move from one qualification to the next, such as a Certificate II to a Certificate III, or a Certificate IV to a Diploma. Generally, successfully completing one level provides the minimum entrance requirements for the next level. Students are able to start at the level that suits their current knowledge and education and then progress to higher level qualifications as their needs, skills and interests develop.

TAFE Entrance

The criteria used to determine entry to TAFE are quite different from those used for University entrance. A key difference is that the TAFE admission process uses a student's school based grades and not a student's performance in the WACE examination.

Students planning a course of study at TAFE are strongly advised to speak to the Head of Career Development at the College with regards to:

- Confirming they have chosen appropriate courses in Year 11 and 12
- Assistance in applying for entry to a TAFE course.

TAFE ENROLMENTS

TAFE enrolments for full-time courses are centrally administered. That is, all applications for entry to TAFE courses are sent to a "central" TAFE Admissions, where they are then processed on behalf of the individual TAFE colleges. Students submit their application in October/November of the year prior to them wishing to commence study at a TAFE campus. The application form allows students to choose up to four (4) preferences based on choice of course and choice of campus.

University bound students are advised to apply for both TAFE and University Courses, to keep their options open.

TAFE TO UNIVERSITY PATHWAY

Some TAFE qualifications can lead to University entry.

Students wishing to pursue the TAFE to University pathway, should contact the relevant University's Prospective Student's Centre directly to gain information on which TAFE qualifications that University will consider for entry into specific courses. Students can also get information on University Advanced Standing or Credit for TAFE qualifications which may result in time off degree courses.

Students need to complete at least a Diploma level course to be considered for entry to UWA while other Universities especially ECU will consider a Certificate IV (although Diploma/Advanced Diplomas are preferred and may give students exemptions from parts of their degree courses).

Each university treats applications by TAFE graduates separately and entry to some Universities is easier than others.

TAFE graduates apply through the Tertiary Institutions Service Centre (TISC) (as do School Leaver students who have an ATAR) for admission to the public universities.

TAFE SELECTION PROCESS

To gain entry into TAFE full time courses, applicants must first meet minimum Literacy and Numeracy standards or achieved a particular VET Qualification level. The minimum entrance requirements for entry to the various levels of courses at TAFE are shown in the table below.

ENTRY TO NON-COMPETITIVE COURSES

TAFE Course	School Leaver	Non-School Leaver	VET QUALIFICATION
Certificate I	Nil	Nil	Nil
Certificate II	OLNA or NAPLAN Yr 9 Band 8	C Grades in Yr 10 English and Maths or equivalent	Certificate I or Certificate II
Certificate III	OLNA or NAPLAN Yr 9 Band 8	C Grades in Yr 10 English and Maths or equivalent	Certificate I or Certificate II
Certificate IV	C Grades in Yr 11 WACE General English and OLNA or NAPLAN Yr 9 Band 8	C Grades in Yr 10 English and Maths or equivalent	Certificate II or Certificate III
Diploma or Advanced Diploma	Completion of WACE General or ATAR (minimum C Grades) or equivalent	Completion of WACE General or ATAR or equivalent (minimum C Grades)	Certificate III

About 70% of full-time courses on offer at TAFE usually have enough places for all applicants. These are called NON-COMPETITIVE courses. To gain entry to these an applicant needs to meet these minimum entrance requirements only. Applicants submit their application online and including their personal information, the name of the qualification for which they are seeking entry and evidence that they meet the entry requirements as outlined above.

SELECTION CRITERIA

For approximately 30% of TAFE courses there are more applicants than there are places available. These are known as 'competitive courses'. In these cases, TAFE uses a range of Selection Criteria where an applicant who has met the minimum entry requirements is awarded a 'point score', which is then used to 'rank' all students applying for a particular course. Students will then be offered a place in this course based on their ranking and the number of places available. Under this system a student's application is assessed and scored out of a possible maximum of 90 points as shown below.

SELECTION CRITERIA FOR COMPETITIVE COURSES – MAXIMUM 90 POINTS	
ACADEMIC ACHIEVEMENT MAXIMUM 60 POINTS	WORK HISTORY MAXIMUM 30 POINTS
<p>Calculated from either: Secondary Education Results (Best 3 Subjects/ Grades)</p> <p>or A Completed VET qualification</p> <p>Points will be calculated for both of these and whichever gives the highest points is used to calculate the score for academic achievement.</p>	<p>Credit for total hours worked at 0.003 points/ hour:</p> <ul style="list-style-type: none"> • employment • work experience • community service or volunteer work <p>If more than one VET qualification has been completed, the one which awards the highest points score will be used.</p>

As the calculation of TAFE entry points is done separately for each particular course, it is not possible to make comments about the general level of scores. Similarly the demand for courses in TAFE varies significantly from year to year.

For these reasons, it is very important that students planning on a TAFE pathway check the Entrance Requirements and, if applicable, the Selection Criteria for those courses in which they are interested. This can be done by visiting the TAFE websites at

1. North Metropolitan TAFE
www.northmetrotafe.wa.edu.au
2. South Metropolitan TAFE
www.southmetrotafe.wa.edu.au

For information on all TAFE full-time courses visit www.fulltimecourses.tafe.wa.edu.au

EMPLOYMENT

Approximately 20% of students in WA seek employment immediately after Year 12.

Entering the workforce is competitive, and employers may require evidence of successful completion of school courses. In addition, workplace experience is highly regarded, so students in the Voc MyWay pathway must study Careers and Enterprise and Workplace learning.

See the **Year 11 and 12 Pathways Guide** for more information.





servite.wa.edu.au